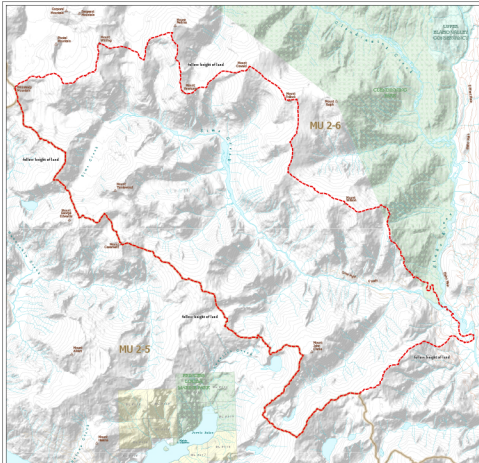


WILDLIFE ACT MOTOR VEHICLE PROHIBITION REGULATION

Map No. 1-65/13
Sims Creek

Motor Vehicle Closed Area
Closed April 1 to June 15



- Motor Vehicle Prohibition Area (Closed Seasonally)
- Wildlife Management Unit
- Provincial Park / Protected Area / Ecological Reserve
- Conservation
- Private Land *

This map is a professional map that can be requested over public facilities such as a roadhouse or other facilities in the area.

Read carefully: a roadhouse is a building that is used for the purpose of providing food and drink to the public. It is not a building that is used for the purpose of providing food and drink to the public.

Scale: 1:60,000



Distance: 1000 meters

Distance: 1000 meters

Provincial Park / Protected Area / Ecological Reserve

Provincial Park / Protected Area / Ecological Reserve

Provincial Park / Protected Area / Ecological Reserve



BRITISH COLUMBIA