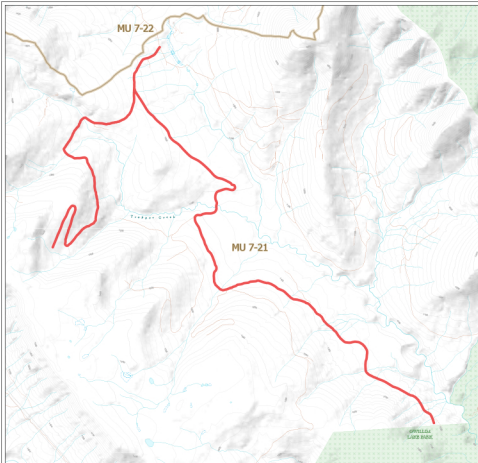


WILDLIFE ACT  
MOTOR VEHICLE  
PROHIBITION REGULATION

Map No. 1-113/23  
Trapper Mountain

Motor Vehicle Closed Areas  
Road Closure



- Wildlife Management Unit
- Provincial Park / Protected Area / Ecological Reserve
- Roads Closed Year Round

This map is a generalized map that can be regarded as a wildlife baseline with a road closure as the primary concern for the user.

Map showing a road closure of the road (including the road) for the purpose of the Wildlife Act and the Wildlife Act.

Scale: 1:50,000



Detailed map data for this map is 1:50,000

Produced by the Wildlife and Ecological Branch  
Revised by: CIBC on 10/10/10

