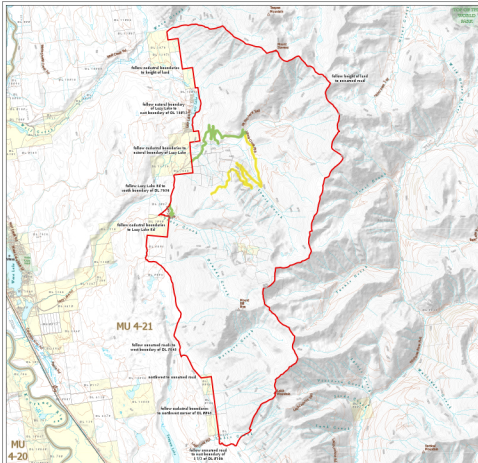


# WILDLIFE ACT MOTOR VEHICLE PROHIBITION REGULATION

Map No. 1-117/23  
Lewis Creek

Motor Vehicle Closed Area  
Closed Year Round



- Motor Vehicle Prohibition Area (Closed Year Round)
- Wildlife Management Unit
- Provincial Parks / Protected Areas / Ecological Reserves
- Private Land \*
- Roads Open Year Round
- Roads Open June 1 - August 31

This map is a professional map that can be required into public facilities such as a roadhouse or other premises in the same jurisdiction.  
Roads are shown in a color representing their status (including 10).  
\*From the Wildlife and Foresting Services of the same jurisdiction as the land ownership.

Scale: 1:10,000

0 1000 2000  
Metres

Distance from this map is 1347 metres

For more information, visit the website:  
British Columbia Wildlife Act

