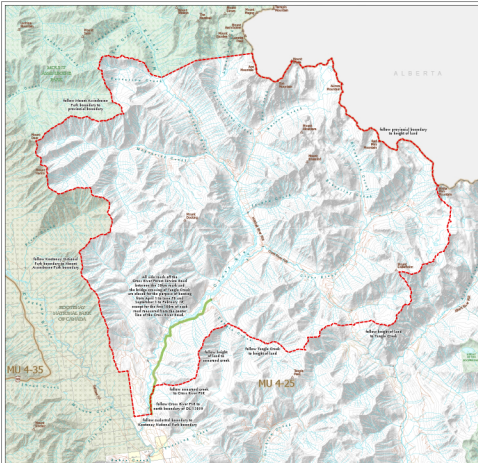


Map No. 2-16/23
Cross River

Manx Whale Boating Closed Areas
Closed April 1 to June 30 and September 1 to February 28
(February 29 in a leap year)



Motor Vehicle Prohibition Area (Closed Seasonally)
Wildlife Management Unit
National Park
Provincial Park / Protected Area / Ecological Reserve
Private Land *
Roads Open Year Round

The bag is a graduated 500-lb size to support one adult horse and a companion or other horse standing in the bag's application.

Hand assembly: a subassembly of hand parts to hand(hg.W)
 Case on the HandTide and HandTide the same, others were no hand assembly

Suzuki et al.

File name

TexteMarkiert ist eine Funktion in MS Word

Trademark for Windows and Windows Server
 Trademark for Oracle reg. 5811493-26

