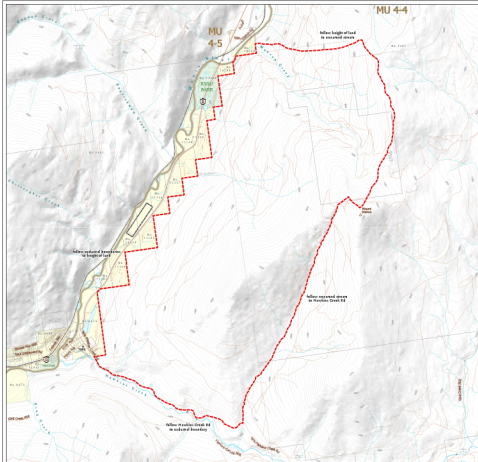


WILDLIFE ACT MOTOR VEHICLE PROHIBITION REGULATION

Map No. 2-52/23
Mount Mahon, Manson Creek and
Hawkins Creek

Motor Vehicle Prohibition Closed Areas
Closed April 1 to June 30 and September 1 to November 30



- ▬ Motor Vehicle Prohibition Area (Closed Seasonally)
- ▬ Wildlife Management Unit
- ▬ Provincial Parks / Protected Areas / Ecological Reserves
- ▬ Private Land *

*This map is a generalized map that can be updated over time. It is not a guarantee of the accuracy of the information shown. It is not a guarantee of the accuracy of the information shown. It is not a guarantee of the accuracy of the information shown.

Scale: 1:25,000

0 1.0
Kilometers

Distance from the map is 1:25,000

Printed at the Wildlife and Conservation Branch

Revised by: CIBC on 10/11/05

